

DÜYEK

HÜZZAM ŞARKI  
(KADIN BİR GÜL AŞK BİR MEVSİM)

BESTE:  
SELAHATTİN İNAL



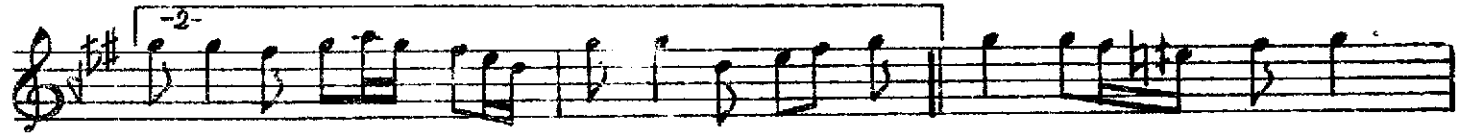
ARANAĞME.....



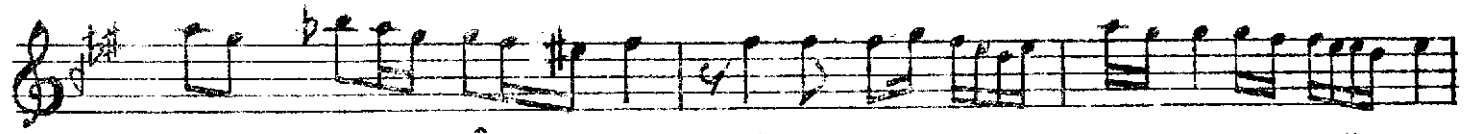
KA DIN... BİR GÜL AŞK BİR MEV SİM TEZ GE ÇER KAN



MA YA..... DEĞ MEZ (Saz.....)



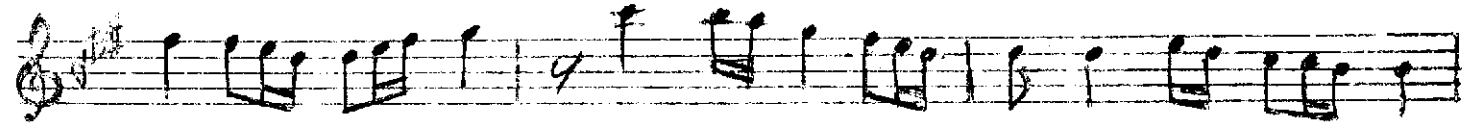
Saz.....) LEY LA..... O LUR



HER MEC NÜ NA BİR ME LEK SAN MA YA..... DEĞ MEZ



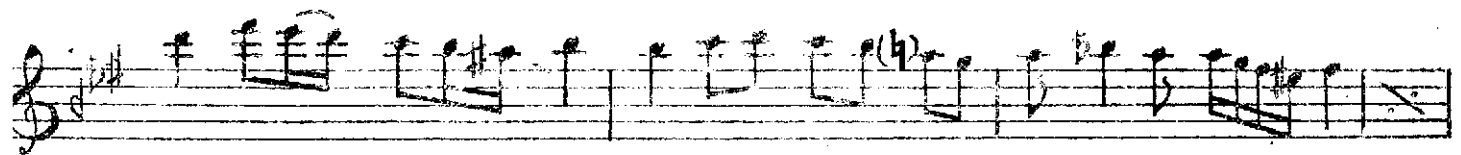
(Saz.....) LEY LA O LUR.....



HER MEC NÜ NA BİR ME LEK SAN MA YA..... DEĞ MEZ



(Saz.....) O NOT O NOT...



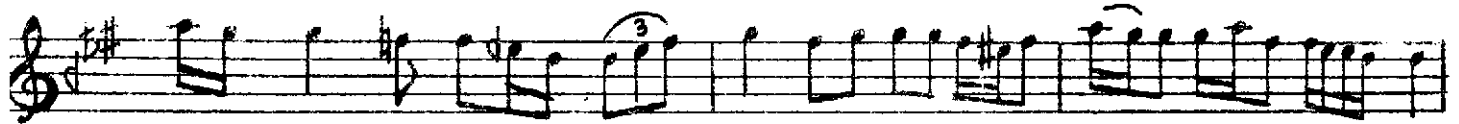
... TU ĞU YER DE..... A DI NE AN..... MA YA.. DEĞ MEZ



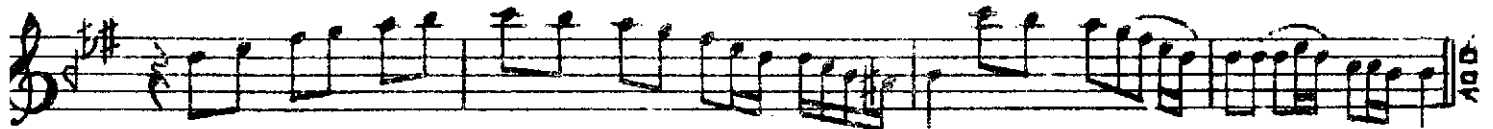
AH..... A DI NS AN MA YA..... DEČ MEZ



(Saz.....)YA SER.. HOŞ KAL



YA RÜ.... YA DA.....HA YAT U YAN ma ya..... DEĞ MEZ



YA SER HOŞ KAL YA RÜ..... YA DA..... HA YATU YAN MA YA İĞ MEZ

KADIN BİR GÜL AŞK BİR MEVSİM TEZ GEÇER KANMAYA DEĞMEZ,  
LEYLA OLUR HER MECNÛNA BİR MÜLEK SANMAYA DEĞMEZ,  
UNUT UNUTTUĞU YERDE ADINI ANMAYA DEĞMEZ  
YA SER HOŞ KAL YA RÛYADA HAYAT, UYANMAYA DEĞMEZ